

ARJO

**FREEDOM BATH**  
BATHING WITHOUT BARRIERS





# MAKING THE BATHING BARRIER DISAPPEAR

**As we get older, getting into and out of the bath becomes more difficult and more dangerous. The high rim height of a standard bath tub becomes an increasingly risky obstacle for the elderly to overcome. Eventually, it can prevent access to residents who could otherwise bathe unattended. The Freedom Bath allows the flexibility for your residents to “age in place.”**

*Freedom Bath* offers a revolutionary solution with its unique Roll-Door. The Roll-Door glides out of sight beneath the bath, saving space and leaving the side of the tub clear for safe and easy entry or exit.

*Freedom Bath* opens the door to true independent bathing both for ambulatory residents as well as residents who need assistance to get into the tub.

All controls can be positioned for convenient operation by either the resident or carer. *Freedom Bath* can also be positioned in numerous ways within the room.

The *Freedom Bath* can be installed in a freestanding position, which is ideal for assisted bathing, allowing the carer access to the resident from three sides.

For unassisted bathing, it can be recessed into a standard bathtub opening.

Bathing comfort is built-in, allowing residents to relax on the semi-reclined seat and enjoy a refreshing shower, a soothing full immersion bath or a relaxing whirlpool or air spa.

The built-in mixer for filling and showering makes the bath very easy to install – you simply connect the unit to the power, the mains water supply and drainage.



The unique Roll-Door of the *Freedom Bath* makes the entry and exit easy and safer than in standard bath tubs.



The *Freedom Bath* is available with hydromassage or air-spa for an enhanced bathing experience.



The *Freedom Bath* is available with a lift accessible option, making it possible for people who need assistance to enjoy a relaxing bath.



When used for assisted bathing, a free-standing installation offers the best solution.



The built-in mixer for filling and showering makes the bath easy to use, and also simplifies the installation procedure.



The support handle gives the resident increased support and security.



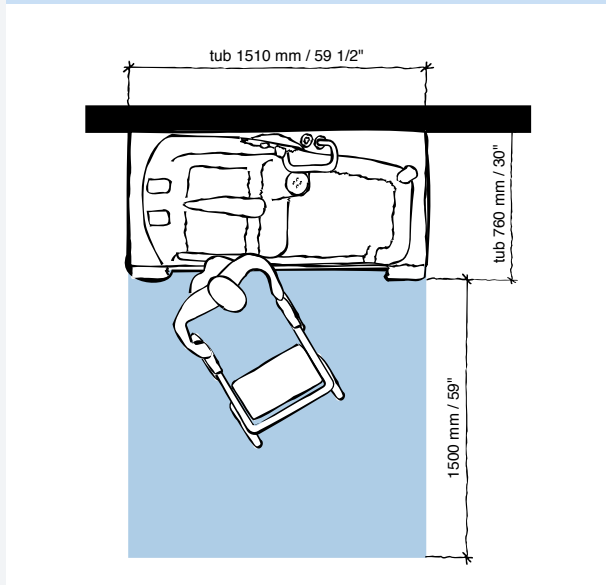
The built-in shower handle is comfortable and always within easy reach.



The air-spa lines are easily disinfected with the disinfection docking handle. Hydromassage lines and pump are easily disinfected with the optional surekleen system.

# PRODUCT SPECIFICATIONS

## Space requirement



## Resident Gallery

Suitable for Albert, Barbara and Carl



- A Albert**, who is ambulatory and independent
- B Barbara**, who can support herself to some degree
- C Carl**, who sits in a wheelchair and has little capacity to support himself

Please contact ARJO for further information on the Resident Gallery™.

## Product information

Width	1510 mm/59"
Height	1050 mm/37"
Depth	760 mm/39 3/4"
Max. static pressure	6 bar (600 kPa, 87 psi)
Min. dynamic pressure	0,5 bar (50 kPa, 7.2psi)
Recommended	>1 bar (100kPa, 15psi)

## Min. flow/supply pipe

25 l/min (5.5 gal/min)
50 l/min CW+HW (11 gal/min CW+HW)

## Cold water temperature

2-25°C (36-77°F)

## Hot water temperature

38-80°C (104-175°F)

Recommended >60°C (140°F)

## Water connections

G3/4" male

## Electrical supply

120V single phase/60Hz/ 15 Amp
230V single phase/50Hz/15 amp

## Freedom Bath integrates with the following ARJO products:

- Stedy
- Encore
- Sara 3000

Use only ARJO Designed Parts, i.e. parts specifically designed for the purpose, on equipment and products supplied by ARJO. Our Conditions of Sale specify that ARJO is not liable for injuries attributable to the use of inadequate parts. Continuous development is part of our policy, and we therefore reserve the right to change specifications without notice.

Encore, Freedom Bath, Sara 3000, Stedy and Resident Gallery are trademarks belonging to Arjo International AG

# ARJO

...with people in mind.

**Arjo International AG**  
 Florenzstrasse 1D, 4023 Basel  
 SWITZERLAND  
 Phone: +41 613 37 9777  
 Fax: +41 613 11 9742  
[www.arjo.com](http://www.arjo.com)

MEMBER OF THE GETINGE GROUP